

Michael Eastman



Derivation

Michael Eastman

Derivation

May 13 - June 24, 2016

William Shearburn Gallery

Derivation revisits one of Michael Eastman's earliest subjects, Forest Park in St. Louis. Throughout the 70s and 80s, Eastman had documented the park regularly: its people, the water, the flora, and ultimately its decline into crumbling walls and overgrowth. Eastman's 1992 book *The Forgotten Forest*, supported by the then-new conservancy Forest Park Forever, walked its viewer through the park in melancholy black and white, shot in the compositionally precise, austere style Eastman has come to be known for.

The photographs in *Derivation* capture in full color a dramatically different, restored Forest Park of present. These are a formal departure from Eastman's meticulous past work, being shot *sans* tripod with a 35mm digital camera while walking on foot. To achieve the images' stippled surfaces, Eastman devised a "metaphorical lens" for his camera, made from pieces of antique glass found at yard sales and souvenir shops. Eastman works intuitively within this process, placing the lenses before the camera. The resulting visual effect traverses a hybrid territory between photography and painting; the images evoke the Impressionists' plein-air landscapes while being produced via photographic means. Eastman describes the photographs' focus as the junction of "sculpture and texture and color and surface," celebrating their spontaneity and accessibility.

All works are:

Archival pigmented ink print on Arches paper
2015

Prints available:

22 1/2 x 30 1/4 inches, edition of 10

34 x 44 inches, edition of 5

44 x 69 inches, edition of 3

Forest Park #1



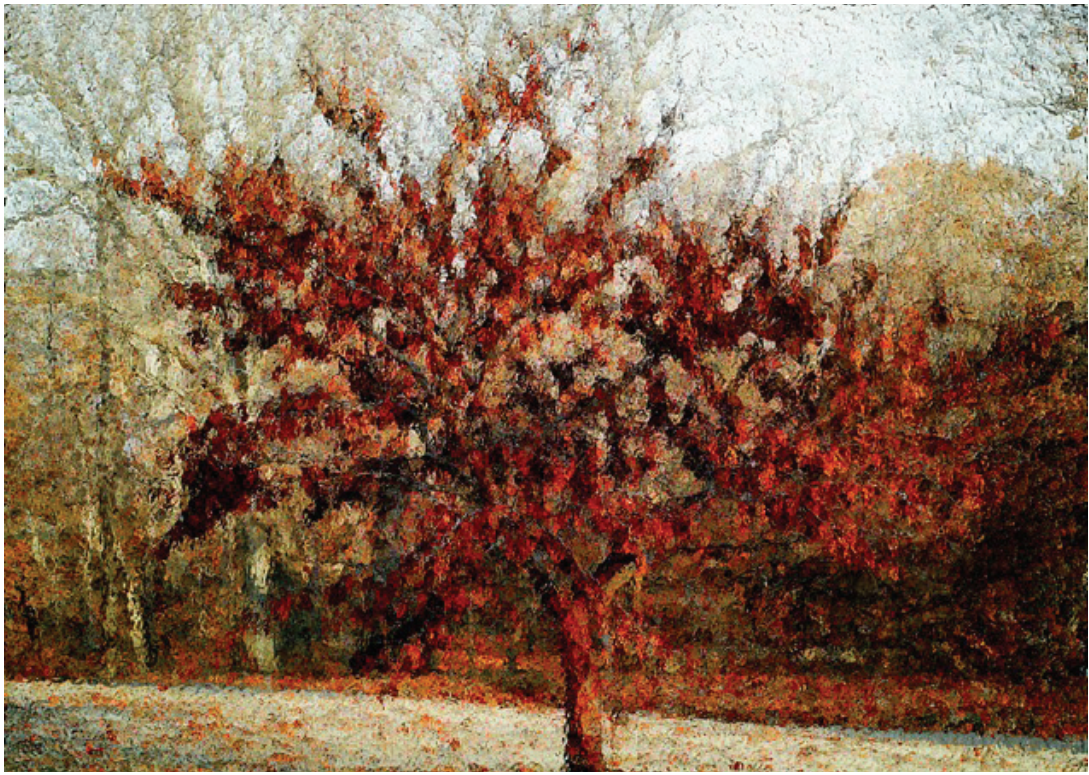
Forest Park #2



Forest Park #3



Forest Park #4



Forest Park #5



Forest Park #6



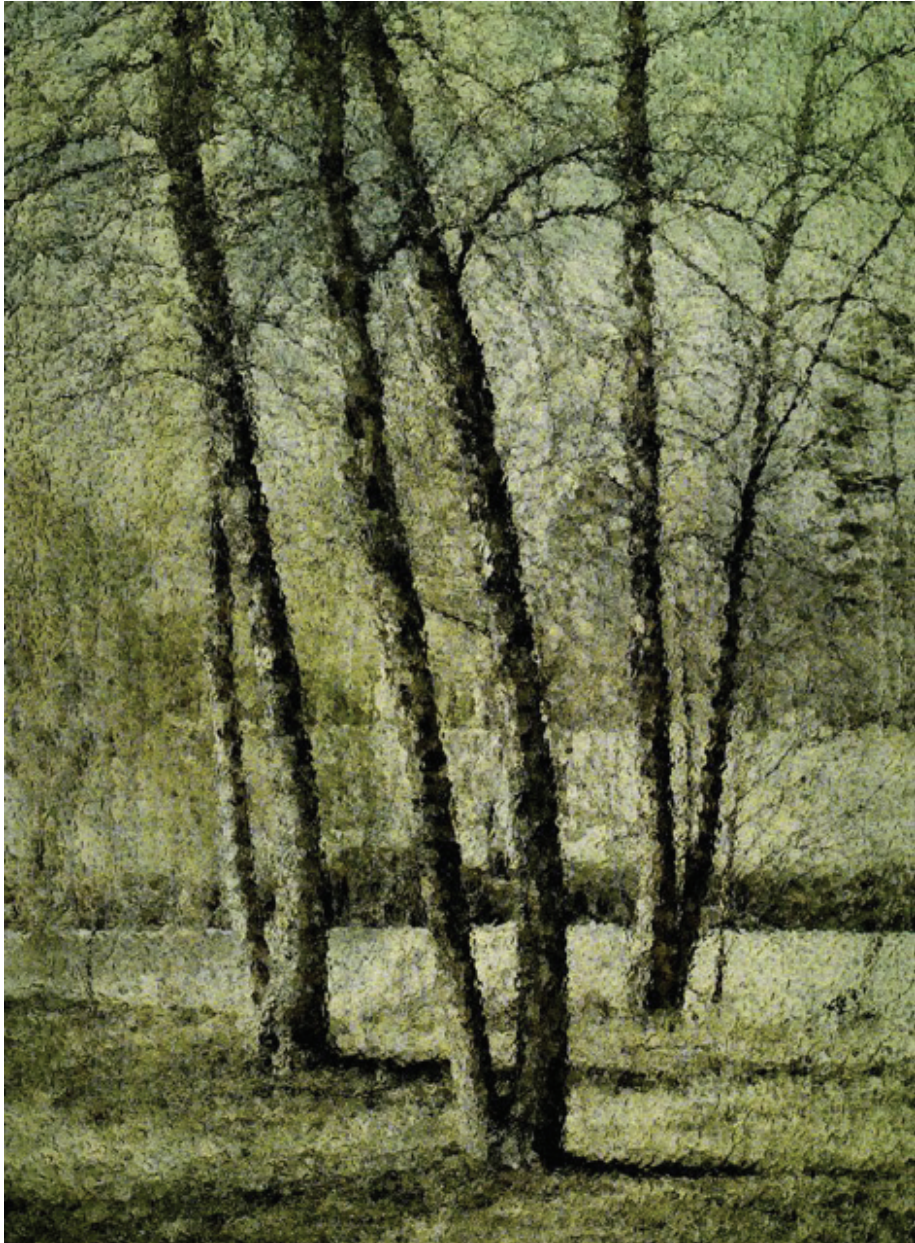
Forest Park #7



Forest Park #8



Forest Park #9



Forest Park #10



Forest Park #11



Forest Park #12



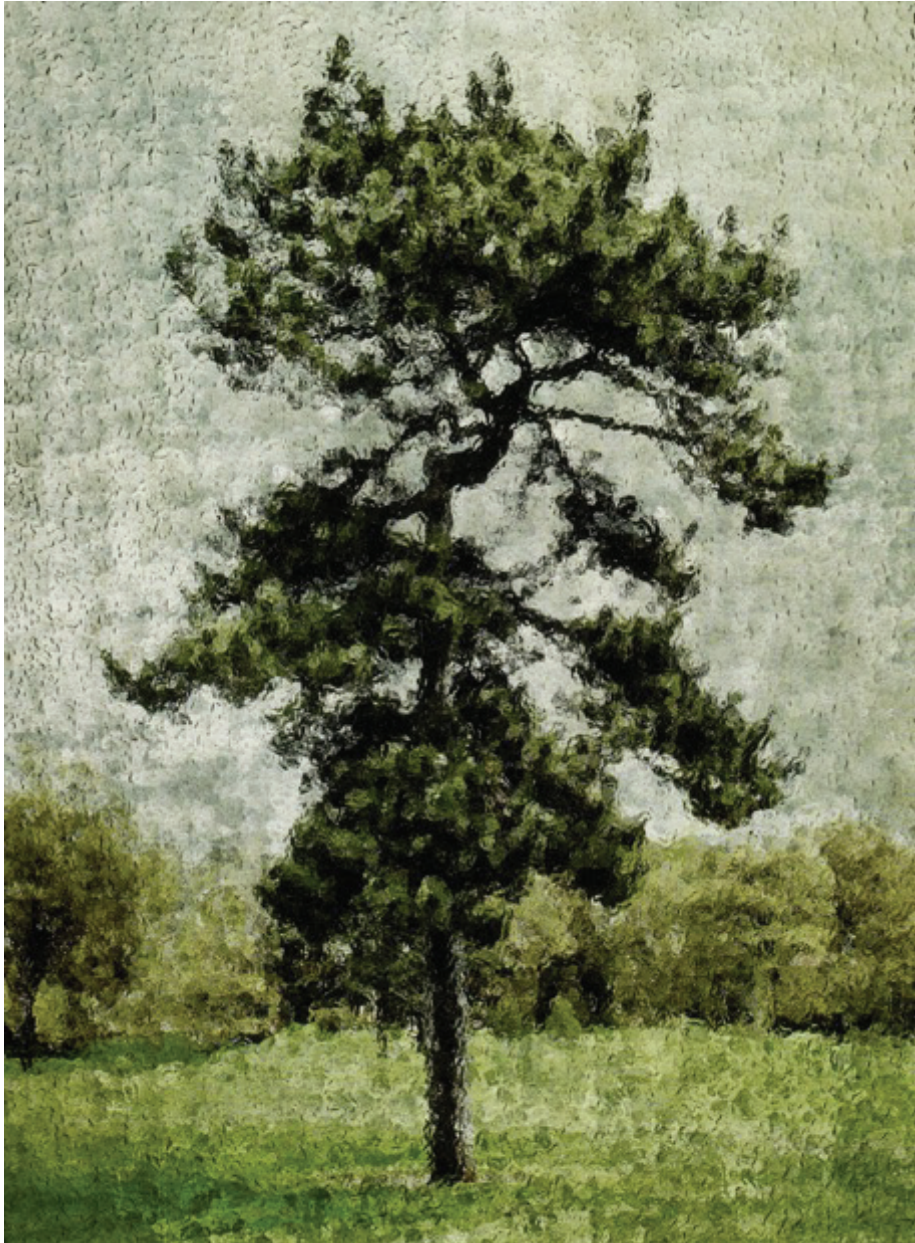
Forest Park #13



Forest Park #14



Forest Park #15



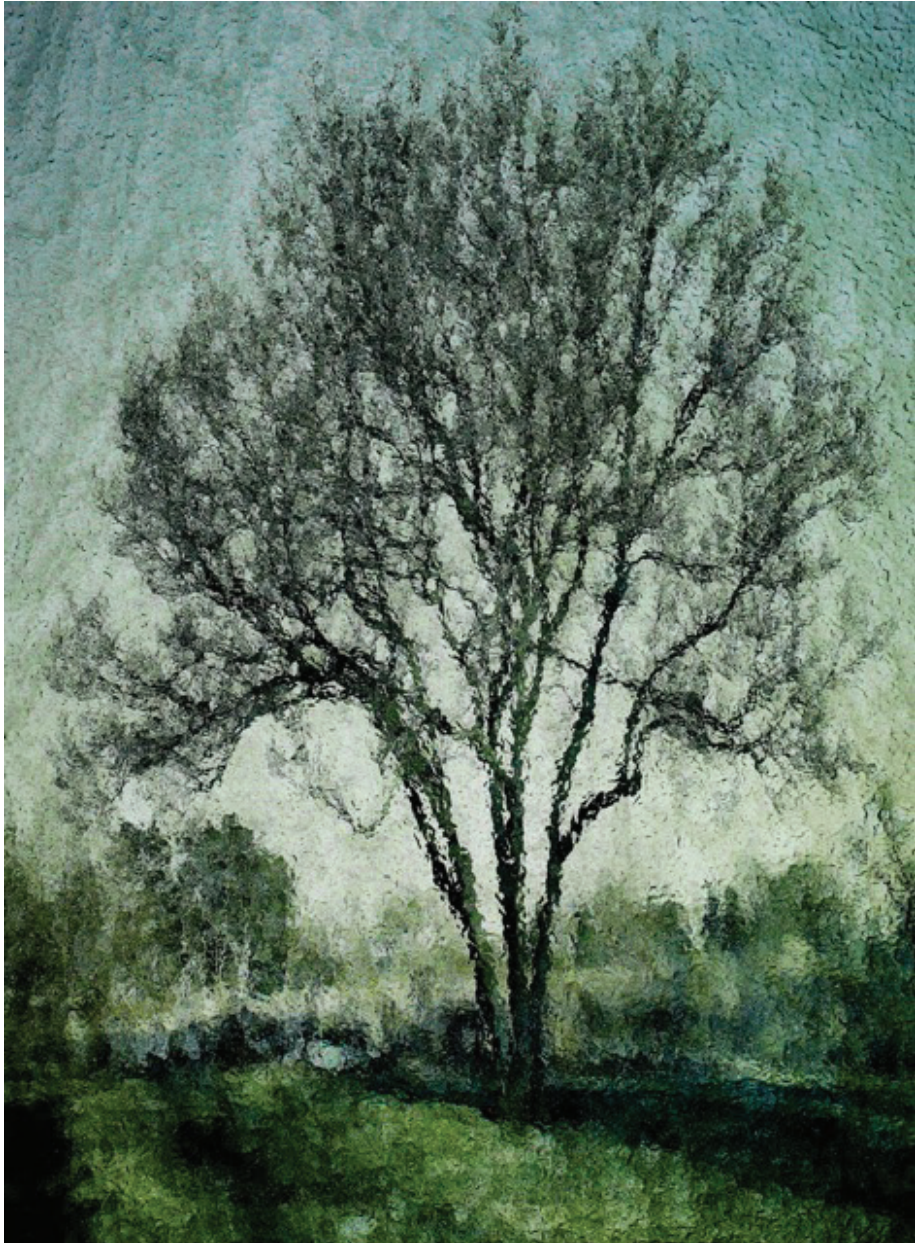
Forest Park #16



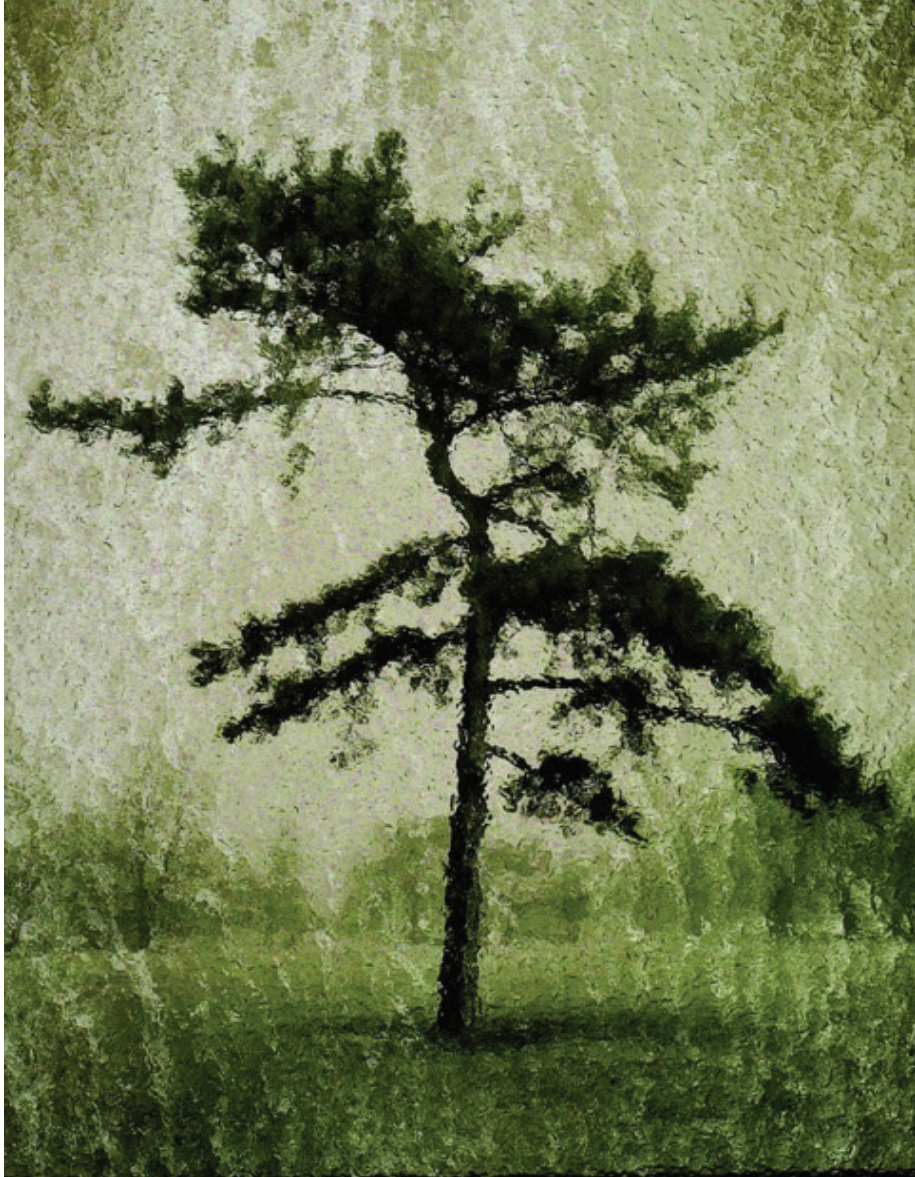
Forest Park #17



Forest Park #18



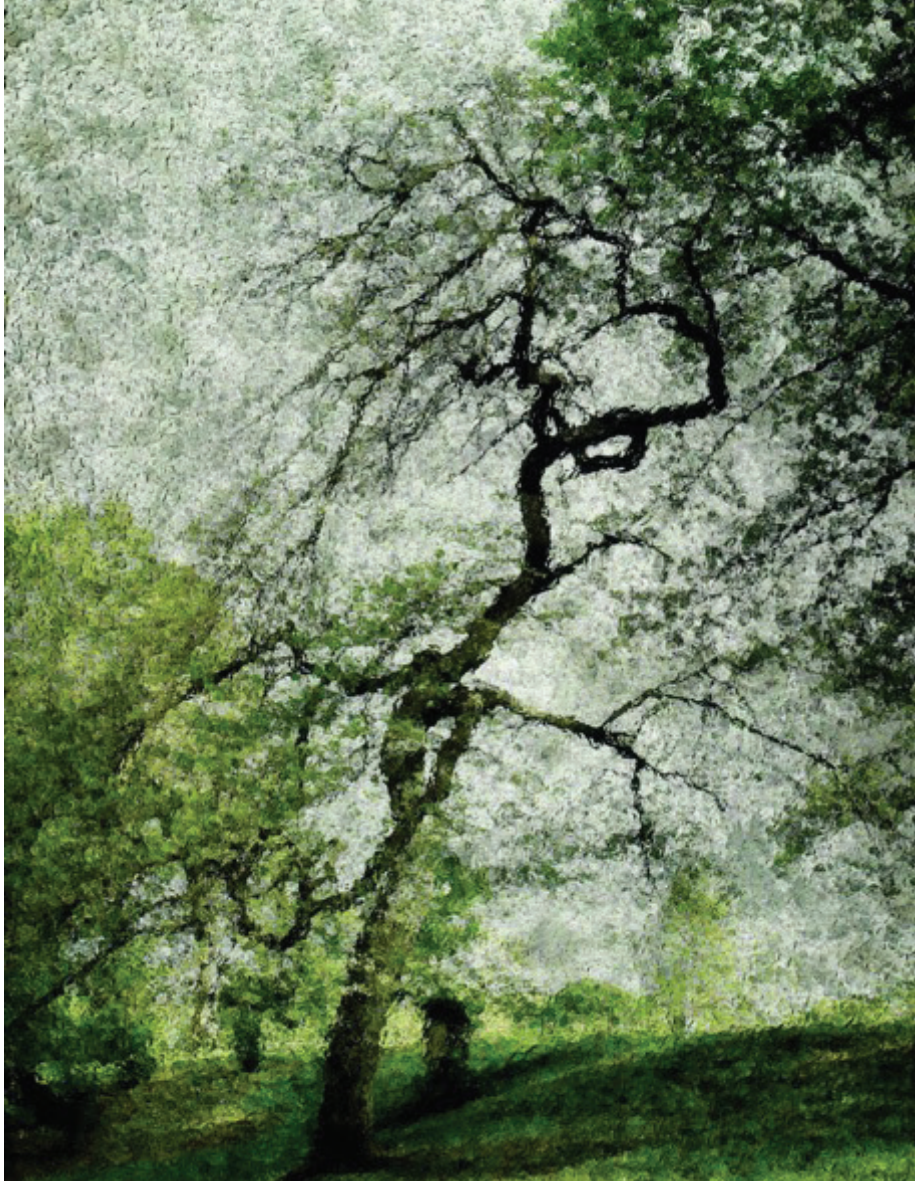
Forest Park #19



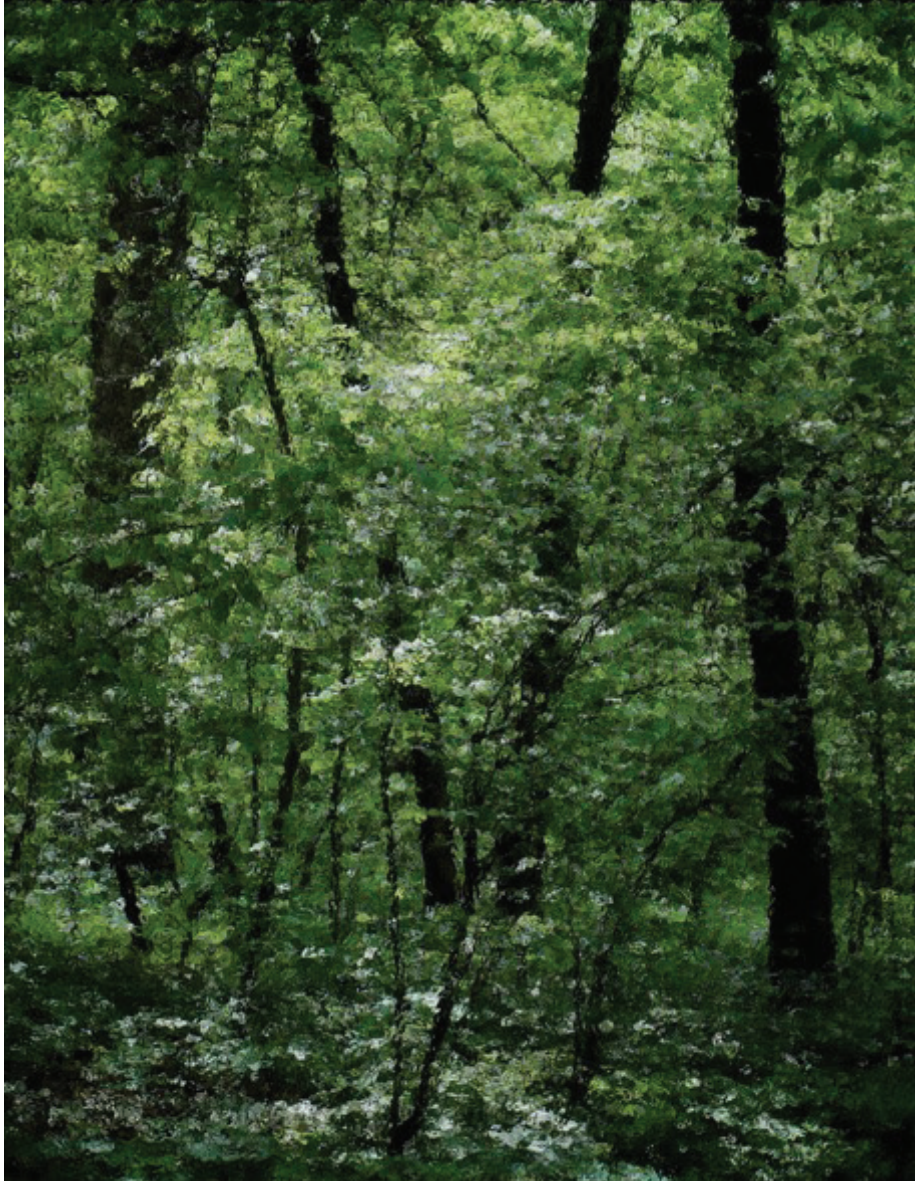
Forest Park #20



Forest Park #21



Forest Park #22



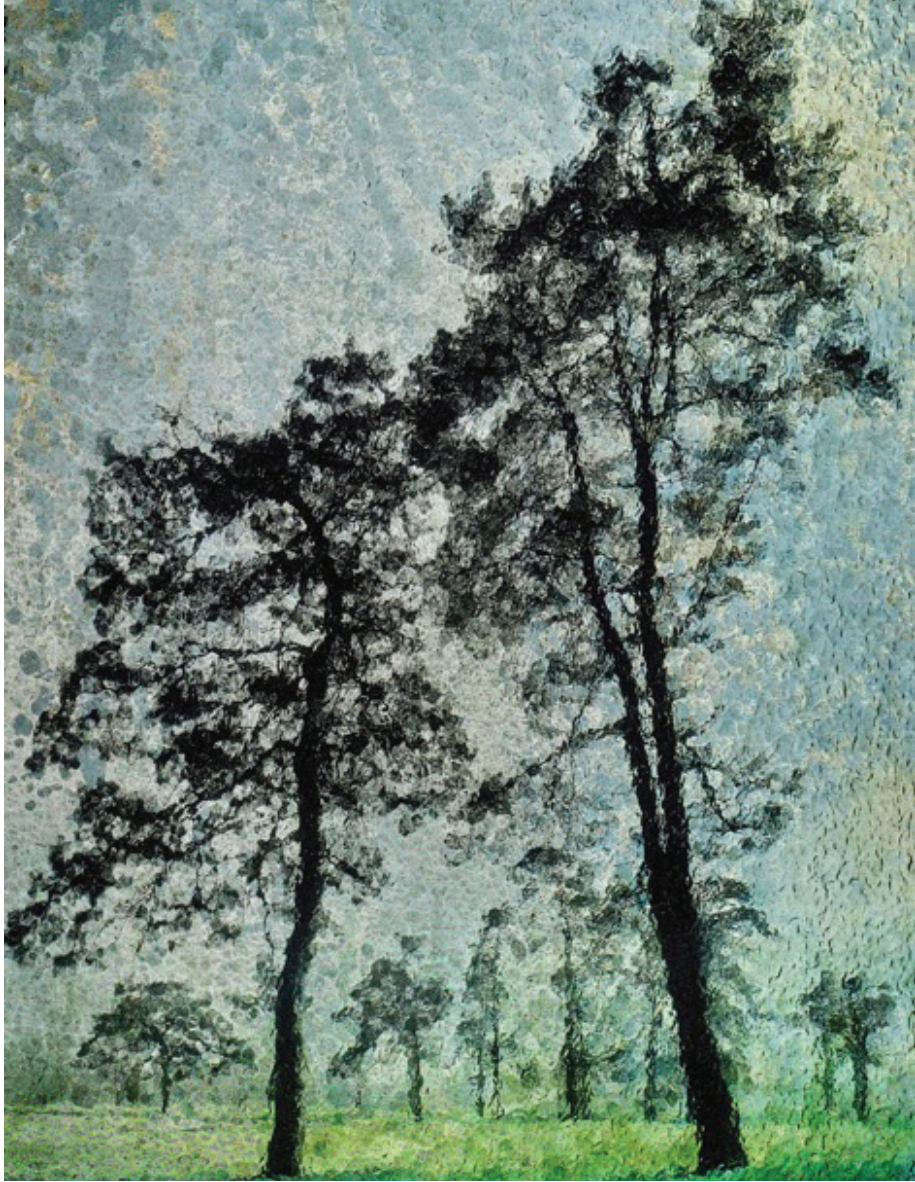
Forest Park #23



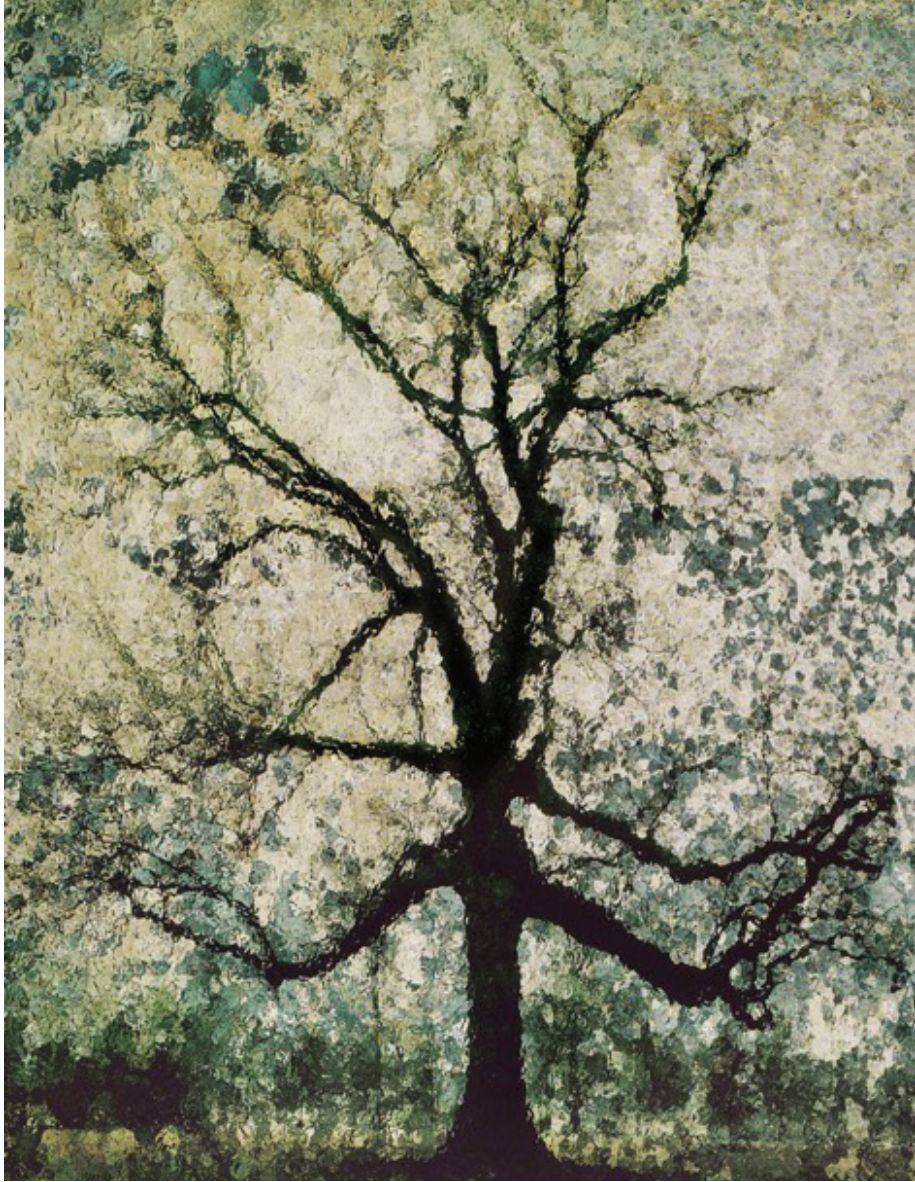
Forest Park #24



Forest Park #25



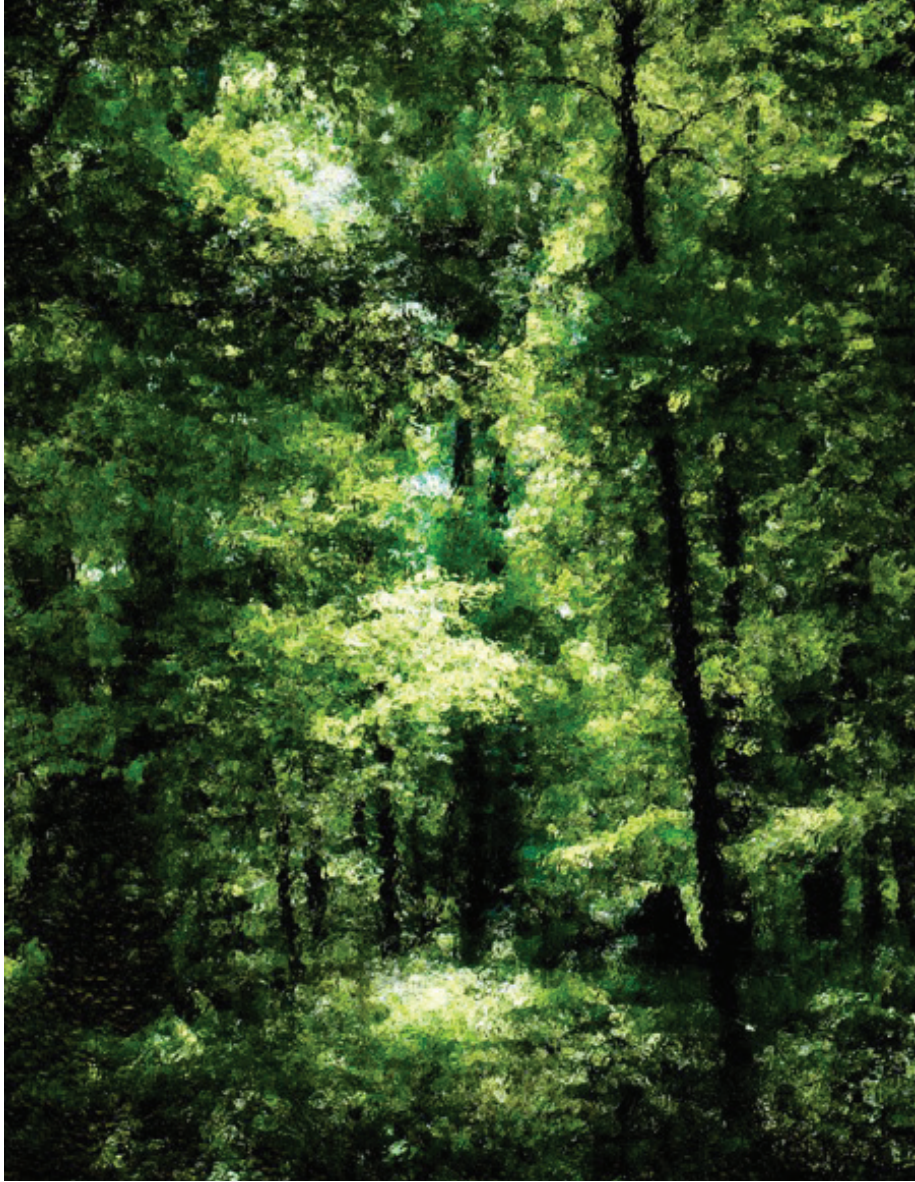
Forest Park #26



Forest Park #27



Forest Park #28



Forest Park #29



Michael Eastman (b. 1947) is celebrated for his large-scale photographs of interior and exterior architecture in cities ranging from Havana to Rome. His photographs have appeared in *Time*, *Life* and *American Photographer*, and they are included in the collections of The Metropolitan Museum of Art, the International Center of Photography, The Art Institute of Chicago, the Los Angeles County Museum of Art, and other prestigious institutions. His books include *Havana* (2011, Prestel), *Vanishing America* (2008, Rizzoli) and *Horses* (2003, Knopf), which is now in its fifth edition. Eastman lives in St. Louis.

Catalog produced for *Derivation*, May 13 - June 24, 2016

Catalog design by Catalina Ouyang

William Shearburn Gallery
665 S. Skinker Blvd
St. Louis, MO 63105
314.367.8020

info@shearburngallery.com
www.shearburngallery.com



William Shearburn *Gallery*